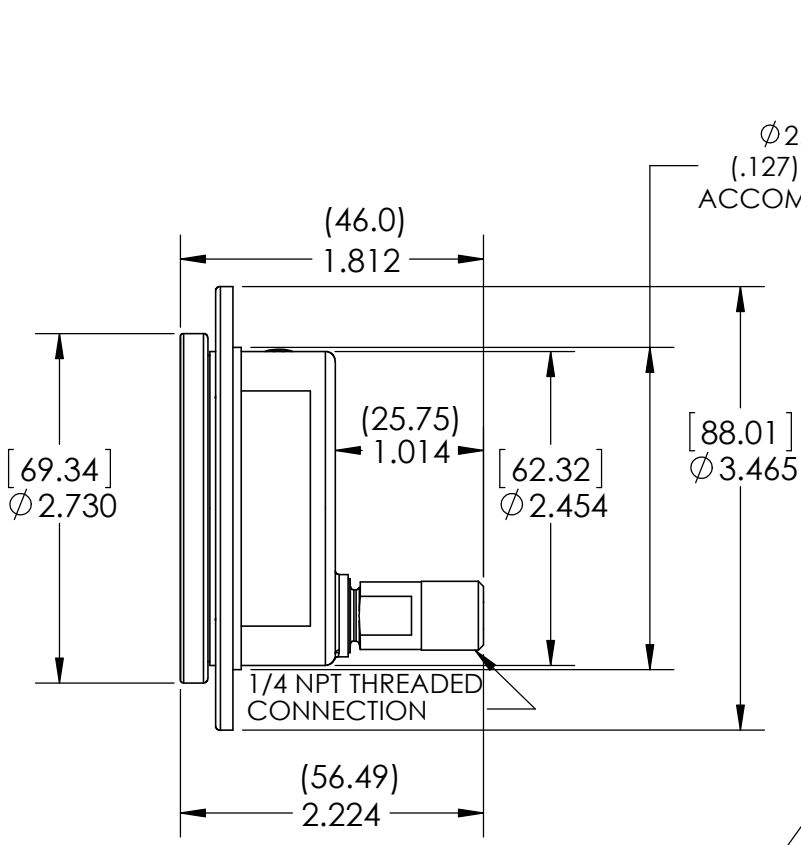


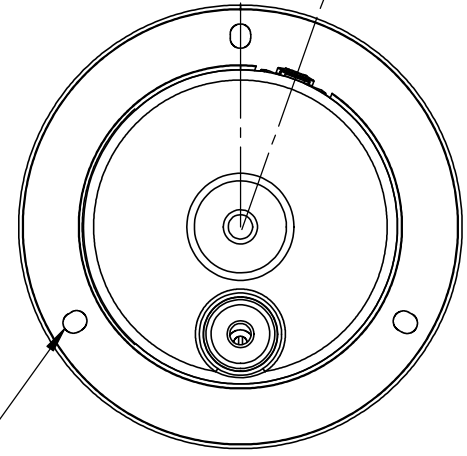


This drawing includes confidential information which is the property of ASHCROFT INC. This copy is loaned for a specific purpose, with the understanding that it will not be reproduced or used for any other purpose or disclosed to others, and it will be returned on demand.



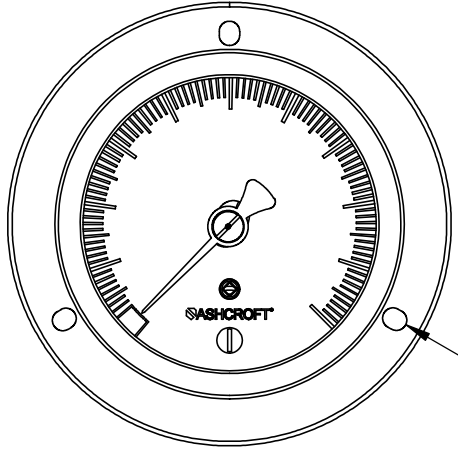
Ø 2.560 (65.02) ±.005
(.127) HOLE IN PANEL TO ACCOMODATE GAUGE CASE

20°
(ANGLE OF TOP FILL HOLE)



REAR VIEW

(3) HOLES Ø .160 (4.06) EQUALLY SPACED 120° APART ON A Ø 2.950 (74.93) ±.005 (.127) B.C. (FOR BOTH PANEL RING & PANEL)



FRONT VIEW

NOTE:
(3) HOLES IN PANEL RING ARE SLIGHTLY ELONGATED FOR INCREASED MANUVERABILITY FOR MTG. SCREW(S) INSERTION

DIMENSIONS IN () ARE IN MILLIMETERS

DIMENSIONS ARE FOR REFERENCE ONLY

REV.	ECO	DESCRIPTION	BY	DATE
C	6627	REMOVED PANEL FROM VIEWS	WM	8/5/2013

This print certified correct for
Customer's Name

**GENERAL DIMENSIONS: TYPE 63-2008
PANEL GAUGE**

Customer's Order No.	Drawn WM	Date 3/27/13	Date of Issue 3/27/13	
Ashcroft Order No.	Checked WM	Date 3/27/13	SHEET-1	Rev.
Certified by	Date	Approved	Date	70A3971 C