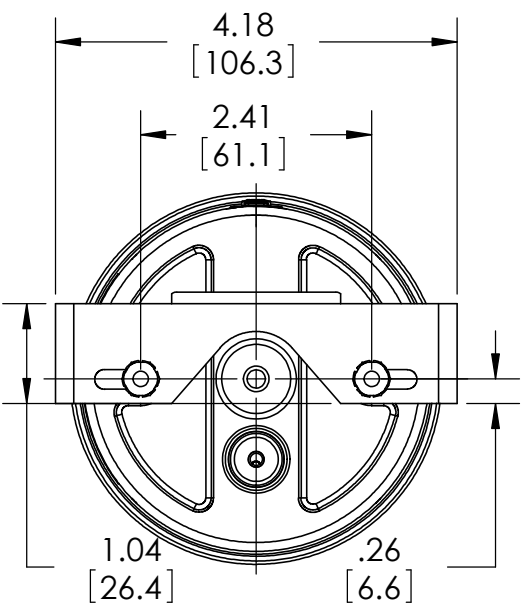
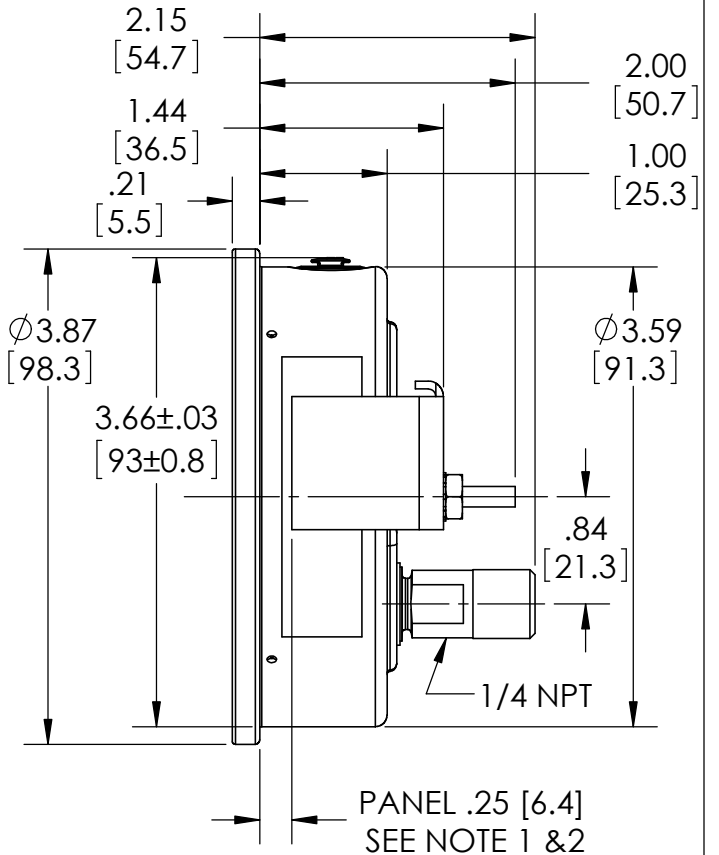
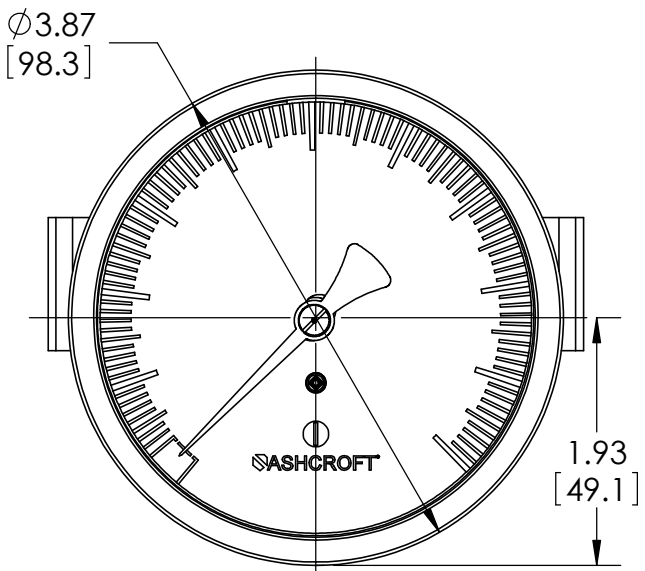


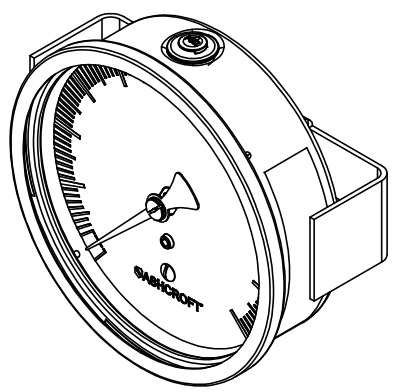


This drawing includes confidential information which is the property of ASHCROFT INC. This copy is loaned for a specific purpose, with the understanding that it will not be reproduced or used for any other purpose or disclosed to others, and it will be returned on demand.

NOTE 1: BRACKET POSITIONED FOR 1/4" PANEL  
 NOTE 2: PANEL THICKNESS RANGES FROM 1/16" TO 1/4"  
 NOTE 3: PANEL CUTOUT-3.66 [93] +/- .03[1]



REAR VIEW



DIMENSIONS IN [ ] ARE MILLIMETERS

| REV. | ECO     | DESCRIPTION                                 | BY  | DATE      |
|------|---------|---|-----|-----------|
| A    | 0004508 | RELEASED GENERAL DIMS. FOR 10 1008S 02B XUC | MJS | 6/23/2010 |

|                                  |           |                           |               |                |          |
|----------------------------------|-----------|---------------------------|---------------|----------------|----------|
| This print certified correct for |           | <b>General Dimensions</b> |               |                |          |
| Customer's Name                  |           | 10 1008S 02B XUC SERIES   |               |                |          |
| Customer's Order No.             | Drawn MJS | Date 6/23/10              | Date of Issue |                |          |
| Ashcroft Order No.               | Checked   | Date                      | SHEET-1       |                | Rev.     |
| Certified by                     | Date      | Approved                  | Date          | <b>70A3073</b> | <b>A</b> |