

# Truncated type flanged diaphragm seal model DT EN

according to EN 1092-1



## FEATURES

- *All-welded design*
- *Variety of wetted parts materials, special materials cover the sealing surface too*
- *Filling port in the instrument connection*
- *Suitable for pressure gauges, switches and transmitters*
- *Continuous duty design*
- *Minimized fill volume*

## APPLICATIONS

- *Corrosive processes*
- *Controlling fugitive emissions*
- *Elevated process temperatures*
- *Suspended solids in the process*
- *Isolated pipes and vessels*
- *Tank level measurement*

## CONSTRUCTION

The DT Type allows a flush installation on thick isolated pipe, tank or vessel applications. All of the combinations afford instrument protection from corrosives, heat and clogging issues associated with viscous media or solids.

## SPECIFICATIONS

### Maximum Pressure Rating

PN16, PN40, others on request

### Flange Material

Stainless Steel 1.4404 (316L), others on request

### Extension tube and diaphragm Materials

Stainless Steel 1.4435 (316L), Hastelloy C-276, Tantalum (diaphragm only), Monel 400, optional PTFE (Teflon) or ECTFA (Halar) coating or Gold plating, others on request

### Instrument Connection Material

Stainless Steel 1.4404 (316L)

### Instrument Connection Sizes

G 1/4, G 1/2 female,  
1/4 NPT, 1/2 NPT female,  
Port for direct welded capillary line

### Process Connections

DN50, DN80, DN100 according to EN 1092-1 Form B1, others on request

### Accuracy (typical)

Seal will add 0,5 % to the stated full scale accuracy of the instrument attached.


### Standard Fill Medias

Silicone  
Halocarbon  
Syltherm  
FDA approved white oil, silicone free  
\*Others available upon request

### ATEX

Conformity according to RL 2014/34/EU appendix X for mechanical equipment in potential hazardous areas:

Optional, marking

CE 0044  II 2 GD c II TX

File no. 35101282 at notified body 0044, TÜV NORD CERT

The temperature class will be determined by the used measuring device.

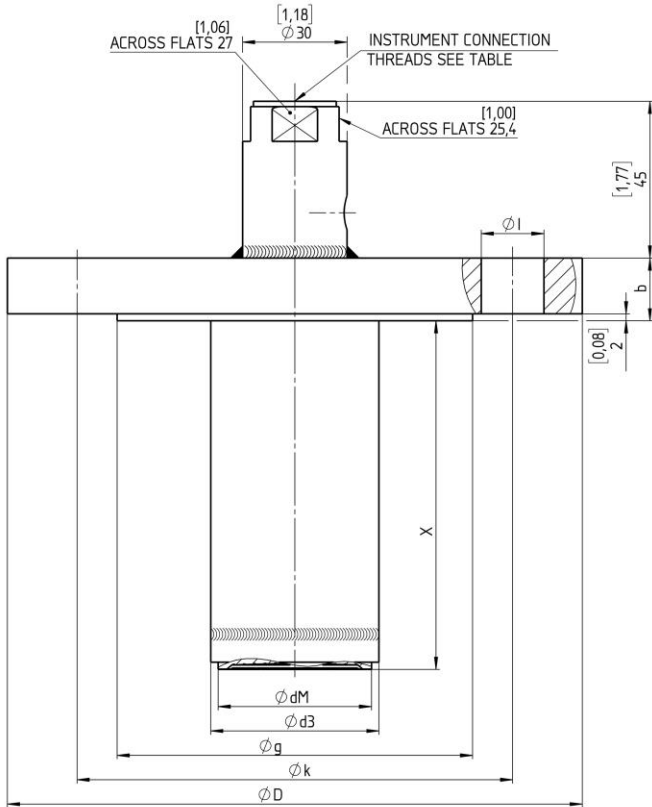
### OPTIONS

DU - Welded instrument connection  
MQ - PMI-test  
6B - Cleaned for Oxygen service  
C3 - Material certificate EN 10204 3.1  
CD5 - NACE certificate

### ACCESSORIES

Capillary line, cooling tower

### General dimensions [mm]



SIZE DN	PRESSURE RATING	Ø D	b	Ø g	Ø dM	Ø d3	Ø k	Ø l	WEIGHT kg
DN50	PN10 - PN16	[6,50] 165	[0,71] 18	[4,02] 102	[1,73] 44	[1,90] 48,3	[4,92] 125	[0,71] 18 x 4	3,5 - 4,0
	PN25 - PN40	[7,87] 200	[0,79] 20	[5,43] 138	[2,24] 57	[2,99] 76,0	[6,30] 160	[0,71] 18 x 8	4,0 - 4,5
DN80	PN10 - PN16	[8,66] 220	[0,79] 20	[6,22] 158	[3,46] 88	[3,70] 94,0	[7,09] 180	[0,71] 18 x 8	5,5 - 7,0
	PN25 - PN40	[9,25] 235	[0,94] 24	[6,38] 162		[7,48] 190	[0,87] 22 x 8		6,5 - 8,0
DN100	PN10 - PN16	[10,8] 270	[0,94] 24	[7,14] 182		[8,14] 200	[8,14] 200		7,0 - 8,5
	PN25 - PN40	[11,4] 285	[1,19] 30	[7,29] 186		[8,29] 204	[8,29] 204		9,0 - 10,5

X	INSTRUMENT CONN. THREADS	CODE
[1,97] 50	1/4 - 18 NPT FEMALE	02T
[3,94] 100	1/2 - 14 NPT FEMALE	04T
[5,91] 150	G 1/2 FEMALE; DIN EN 837	51T
[7,87] 200	G 1/4 FEMALE; DIN EN 837	26T
	WELDING PORT	00T

Rev. A

### Order information

Process connection	Extension tube and diaphragm material	Flange material	Instrument connection	Rating	Flange form	Extension	Filling fluid	Options
Nominal Diameter	(S-S) 316L (1.4435)	(S) 316L (1.4404)	(00T) Welding port	Nominal pressure	(B1) Raised face form B1	Length in mm	(CK) Silicone (direct mounted or with capillary ≤ 10' (3 m), -40/600 °F, -40/315 °C)	(6B) Cleaned for Oxygen service (Halocarbon filling required)
(DN50)	(S-H) 316L (1.4435) and Hastelloy C 276	(P) Monel 400	(02T) 1/4 NPT female	(PN16)		(50)		(ATEX) ATEX approval
(DN80)	(S-U) 316L (1.4435) and Tantalum <sup>1)</sup>	(H) Hastelloy C 276	(04T) 1/2 NPT female	(PN40)		(100)	(EJ) Silicone (with capillary > 10' (3 m), -40/600 °F, -40/315 °C)	(DU) Welded instrument connection
(DN100)	(P-P) Monel 400		(51T) G 1/2 female			(150)	(CF) Halocarbon (direct mounted or with capillary, -70/300 °F, -56/149 °C)	(NH) Tagging wired
	(H-H) Hastelloy C276		(26T) G 1/4 female			(200)	(HA) Syltherm 800 (direct mounted or with capillary, -40/750 °F, -40/400 °C)	Material certificates according EN 10 204
	(H-U) Hastelloy C276 and Tantalum <sup>1)</sup>						(GQ) FDA approved white oil, silicone free (direct mounted or with capillary ≤ 10' (3 m), 15/480 °F, -10/250 °C)	(C3) 3.1 traceability
	(S-S-H) 316L (1.4435) Halar coated (ECTFE) <sup>2)</sup>							(CD5) NACE certificate MR 01-75/ ISO 15156
	(S-S-TC) 316L (1.4435) Teflon coated							(MQ) PMI test
	(W) Gold plated							(1115A) Stainless steel armored capillary <sup>1)</sup>
	<sup>1)</sup> max. temp. 480 °F, 250 °C <sup>2)</sup> max. temp. 300 °F, 150 °C							(1115P) Stainless steel armored capillary with PVC sheathing <sup>1)</sup>
others on request		others on request	others on request	others on request	others on request	others on request	others on request	<sup>1)</sup> see data sheet G3.1115

### Order example

Process connection    Type    Ext. tube and diaphragm    Flange material    Instrument connection    Rating    Flange form    Extension    Filling fluid    Option

DN50	DT EN	S-H	S	04T	PN40	B1	100	CK	C3
------	-------	-----	---	-----	------	----	-----	----	----

### Ashcroft Instruments GmbH

Germany  
Max-Planck-Str. 1,  
D-52499 Baesweiler  
P.O. Box 11 20, D-52490 Baesweiler  
Tel.: +49 (0) 2401 808-0

France  
„206“ ZA du Mandinet, 1/3 Rue des Cam-  
panules,  
F-77185 Lognes  
Tel.: +33 (0) 1 60 37 25 30

Website: www.ashcroft.eu

Ashcroft Instruments Ltd.  
Unit 17 & 18 William James House  
Cowley Road,  
Cambridge CB4 0WX  
Tel.: +44 (0) 12 23 39 55 00

e-Mail: sales@ashcroft.com

Ashcroft ISTANBUL  
Gayrettepe Mah. Yildiz Posta Cad.  
Yildiz Residence No:24 K:1 D:4  
34349 Besiktas -Istanbul  
Tel.: +90 (0)212 3270847