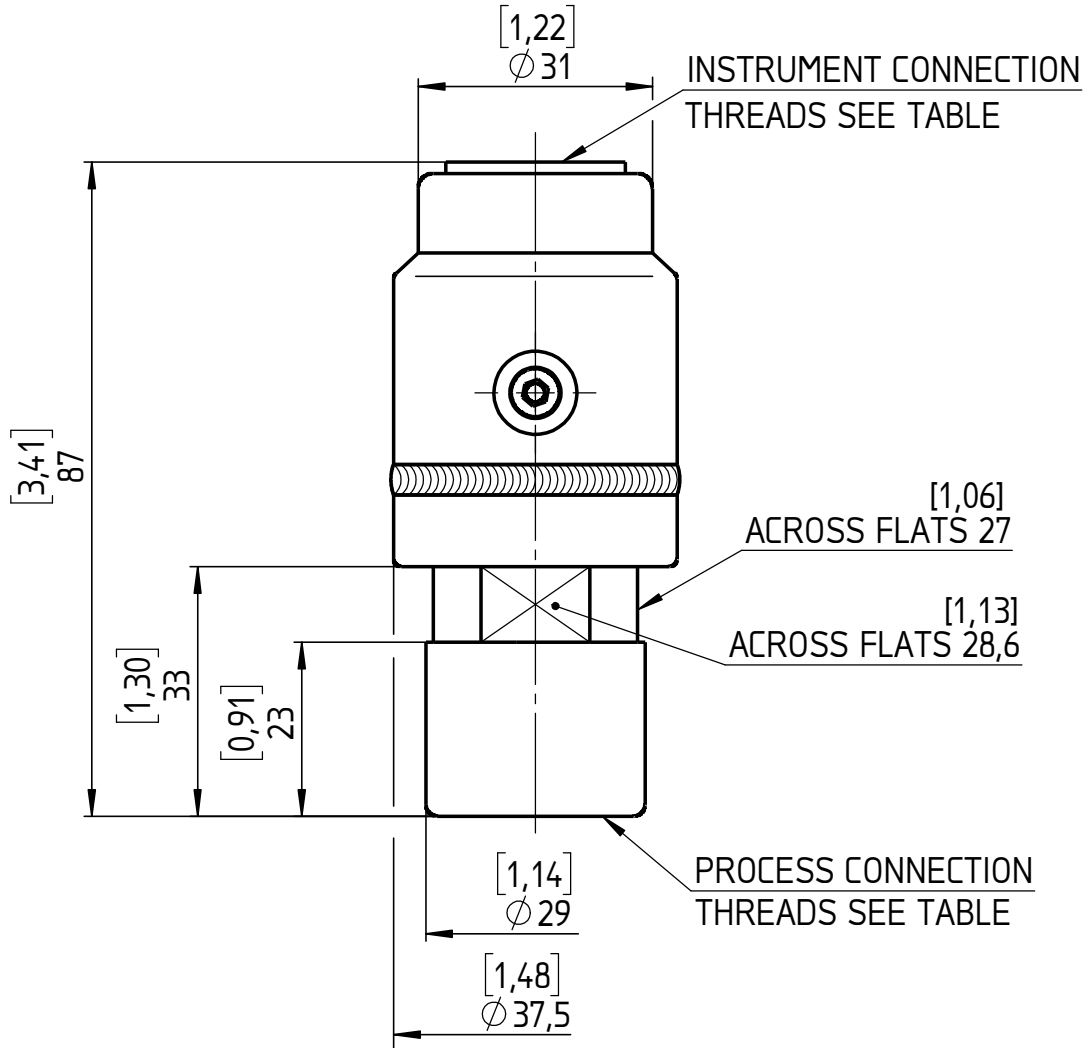
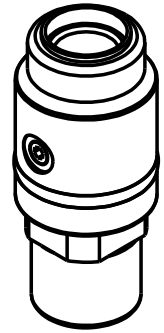


INSTRUMENT CONNECTION THREADS	CODE
1/4-18 NPT FEMALE	02T
1/2-14 NPT FEMALE	04T
G 1/4 FEMALE; DIN EN 837	13T
M20x1,5 FEMALE; DIN 3852-1	16T
G 1/2 FEMALE; DIN EN 837	51T

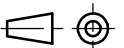


PROCESS CONNECTION THREADS	CODE
1/4-18 NPT FEMALE	25
G 1/4 FEMALE; DIN EN 837	26
1/2-14 NPT FEMALE	50
G 1/2 FEMALE; DIN EN 837	51

All specifications are subject to change without notice.

This drawing includes confidential information which is the property of ASHCROFT INC. This copy is loaned for a specific purpose, with the understanding that it will not be reproduced or used for any other purpose or disclosed to others, and it will be returned on demand.

Dimensions in mm [inch]



General Dimension

Seal 510, High Pressure 5000 psi, female process connection

DWG. NO. A 076 | 3-510-
High Pressure-female

Rev.	Description	Date	Na.	Date	Name
				09.06.16	C. Baumga.
				11.07.16	<i>C. Baumga.</i>
A	Add CODE 16T	11.07.16	Krott		

ASHCROFT