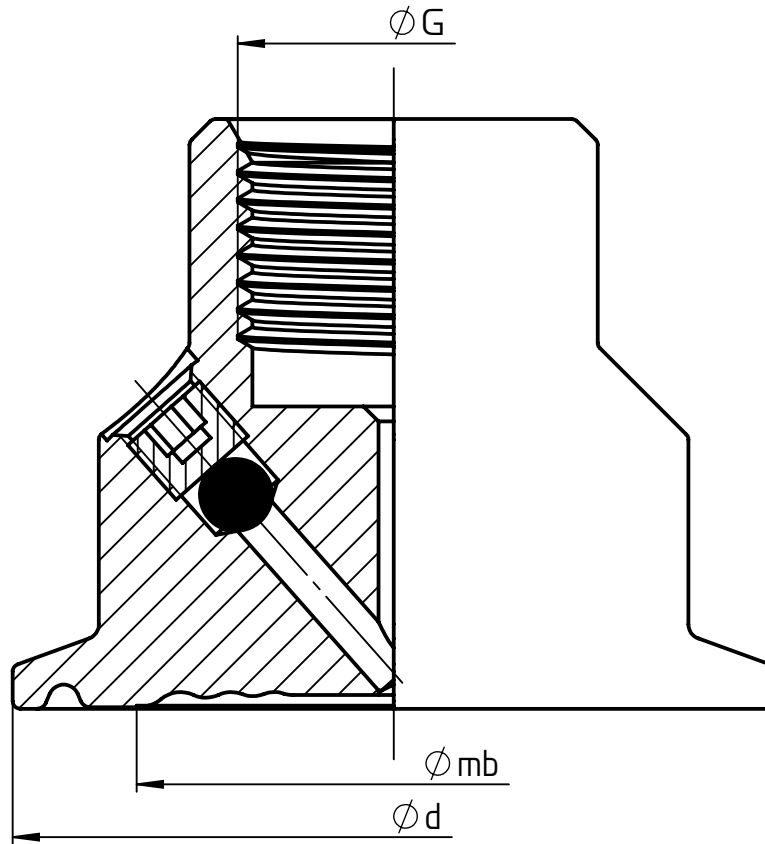
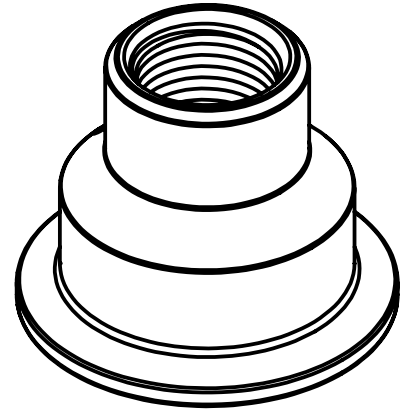


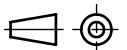
CONNECTION SIZE	CODE	ϕd	ϕmb	G	Weight kg
1/2-3/4" TRI-CLAMP	S75	[0,98] 25	[0,67] 17	13T G 1/4	0,2
1" TRI-CLAMP	S10	[1,99] 50,5	[0,91] 23	51T G 1/2	0,3
1 1/2" TRI-CLAMP	S15	[1,99] 50,5	[1,34] 34		0,3
2" TRI-CLAMP	S20	[2,52] 64	[1,81] 46	or	0,5
2 1/2" TRI-CLAMP	S25	[3,05] 77,5	[2,28] 58	INA other conn. using adapter from G 1/2	0,6
3" TRI-CLAMP	S30	[3,58] 91	[2,72] 69		0,9
4" TRI-CLAMP	S40	[4,69] 119	[3,74] 95		1,5



All specifications are subject to change without notice.

This drawing includes confidential information which is the property of ASHCROFT INC. This copy is loaned for a specific purpose, with the understanding that it will not be reproduced or used for any other purpose or disclosed to others, and it will be returned on demand.

Dimensions in mm [inch]



General Dimension

Sanitary Diaphragm Seal
Model 322 Tri-Clamp

Rev.	Description	Date	Na.	Date	Name
				Drawn	17.11.20 J. Krott
				Checked	30.04.21 <i>C. Krott</i>
A	Title changed	30.04.21	Krott		

ASHCROFT

DWG. NO.

A 076 | 3-322