

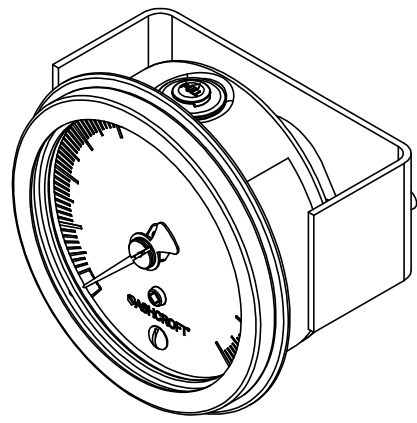
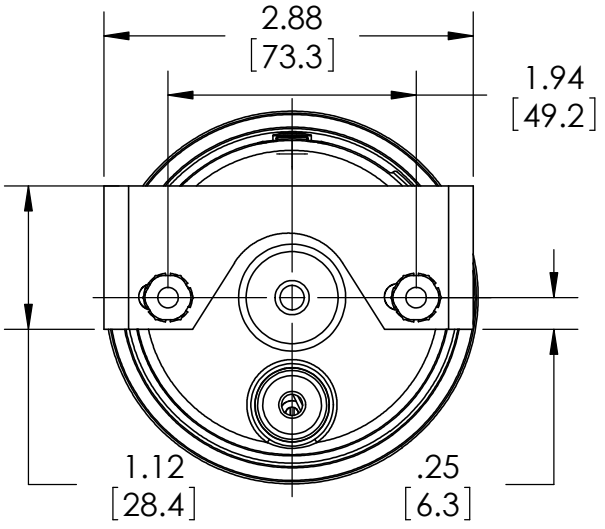
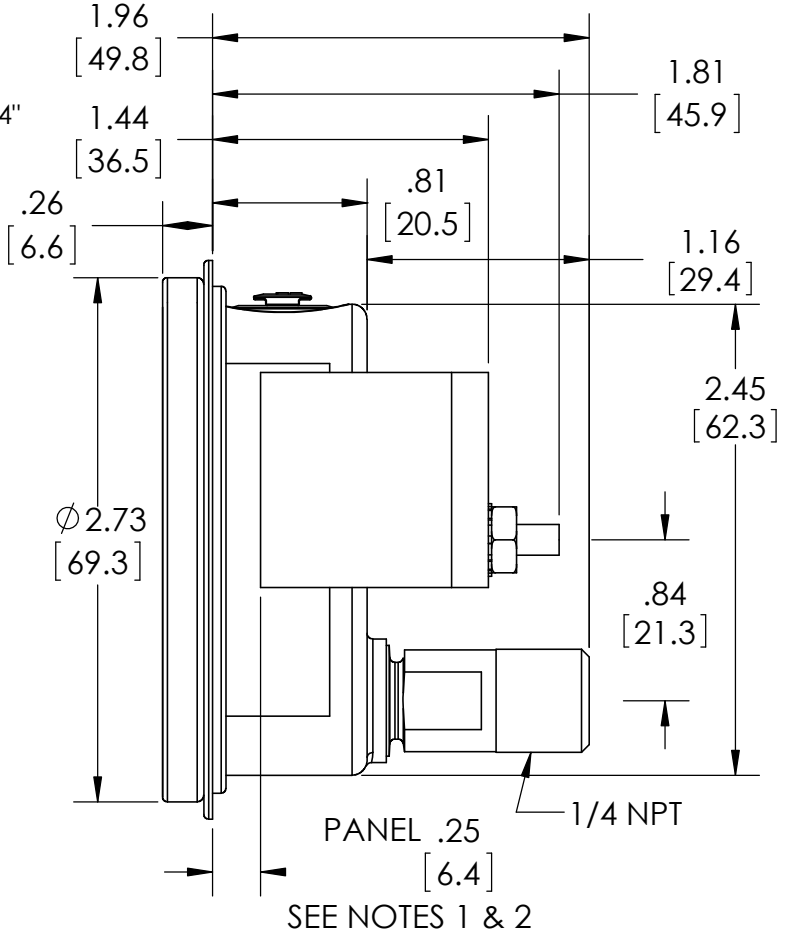
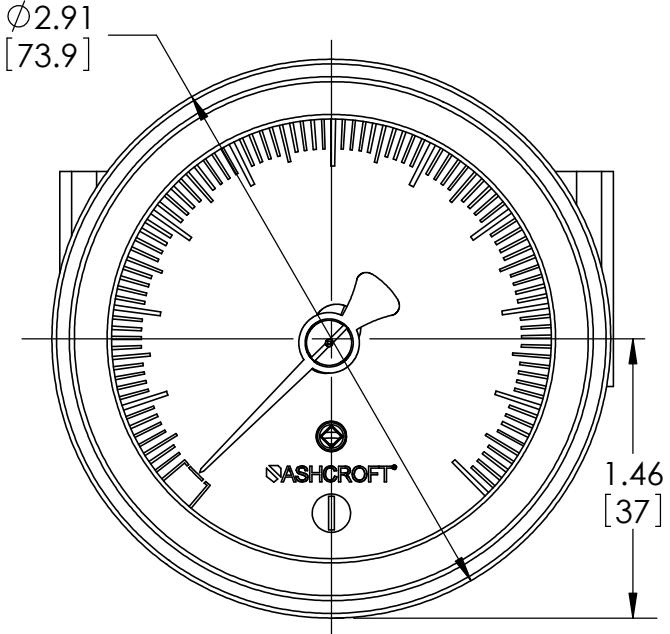


This drawing includes confidential information which is the property of ASHCROFT INC. This copy is loaned for a specific purpose, with the understanding that it will not be reproduced or used for any other purpose or disclosed to others, and it will be returned on demand.

**ASHCROFT** INC.

250 EAST MAIN STREET  
STRATFORD, CT 06614

NOTE 1: BRACKET POSITIONED FOR 1/4" PANEL  
NOTE 2: PANEL THICKNESS RANGES FROM 1/16" TO 1/4"  
NOTE 3: PANEL CUTOUT: 2.53[64] +/- .03[1]



DIMENSIONS IN [ ] ARE MILLIMETERS

REAR VIEW

| REV. | ECO     | DESCRIPTION         | BY  | DATE       |
|------|---------|---------------------|-----|------------|
| B    | 0006096 | REVISED RING DESIGN | WGM | 11/27/2012 |

|                                  |           |                           |               |                |          |
|----------------------------------|-----------|---------------------------|---------------|----------------|----------|
| This print certified correct for |           | <b>General Dimensions</b> |               |                |          |
| Customer's Name                  |           | 63 1008S 02B XJC SERIES   |               |                |          |
| Customer's Order No.             | Drawn MJS | Date 6/23/10              | Date of Issue |                |          |
| Ashcroft Order No.               | Checked   | Date                      | SHEET-1       |                | Rev.     |
| Certified by                     | Date      | Approved                  | Date          | <b>70A3071</b> | <b>B</b> |